

GALWAY



SAMMY'S
DESIGNER FLOORING

GALWAY

GALWAY ASH
30x60 cm/11.8"x24" RC

GLAZED PORCELAIN STONEWARE + COLOUR BODY + RECTIFIED + MATT
GRES PORCELÁNICO ESMALTADO + PASTA COLOREADA + RECTIFICADO + MATE
60x120 cm/24"x48" + 60x60 cm/24"x24" + 30x60 cm/11.8"x24"



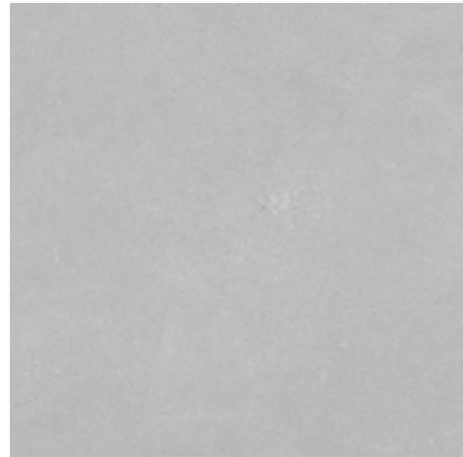
COLOURS: / COLORES:



GALWAY ALBAR



GALWAY NUT



GALWAY ASH

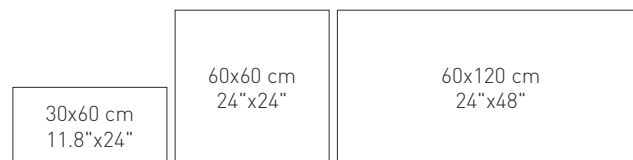


GALWAY DARK



AVAILABLE FORMATS: / FORMATOS DISPONIBLES:

PIECES NAME NOMBRE DE LA PIEZA	SIZES (CM) FORMATOS (CM)	WORK SIZE (MM) FORMATO DE FABRICACIÓN (MM)
GALWAY RC	60x120 cm/24"x48"	600 x 1200 x 10,5
GALWAY RC	60x60 cm/24"x24"	600 x 600 x 9
GALWAY RC	30x60 cm/11.8"x24"	300 x 600 x 9



ADDITIONAL INFORMATION: / INFORMACIÓN ADICIONAL:

	CLASS 2 UNE ENV 12633.2003 ANTI-SLIP Test performed in a single production / Prueba realizada en una sola producción.
	Aesthetic classification: V.1 UNIFORM APPEARANCE Clasificación estética: V.1 APARIENCIA UNIFORME
	We recommend using a minimum joint width of 3 mm. Never fit tiles without joints between them. Protecting the product during placement and appropriate cleaning after grouting and other work are part of a correct fitting process.

SKIRTING: / RODAPIE:

120x9.8 cm/48"x4"	
60x8 cm/24"x3"	

GRADONE STRAIGHT:
PELDAÑO GRADONE:

60x120 cm/24"x48"
60x60 cm/24"x24"
30x60 cm/11.8"x24"