

GOLDEN AGE

Every nation had a peak of beauty and preciousness in the arts and architectural expression, a period called the Golden Age. We evoke those atmospheres by introducing Golden Age, a collection inspired by 3 refined and precious marbles. Golden Age has been developed with the original 3D Shaped Technology.



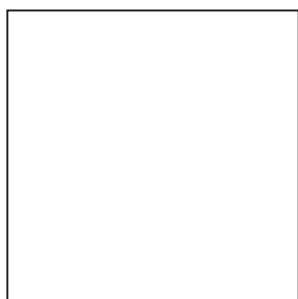
SAMMY'S
DESIGNER FLOORING



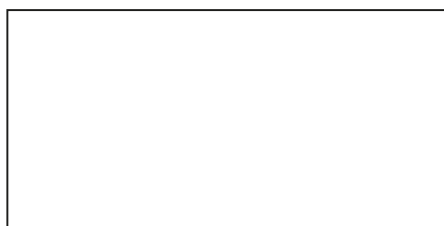
WHITE



GREY



≡ 10 MM
80X80 (32"X32") RET
1G62 WHITE
1G63 BEIGE
1G64 GREY



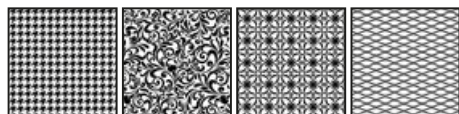
≡ 10 MM
60X120 (24"X48") RET
4U11 WHITE
4U12 BEIGE
4U13 GREY



≡ 10 MM
60X60 (24"X24") RET
7W91 WHITE
7W92 BEIGE
7W93 GREY



≡ 10 MM
30X60 (12"X24") RET
3J91 WHITE
3J92 BEIGE
3J93 GREY



≡ 10 MM
30X30 DEC (12"X12") ⊕ ★
3LA9 WHITE
3LA8 BEIGE
3LA7 GREY



≡ 10 MM
15X60 (6"X24") ⊕
5CD8 WHITE
5CD7 BEIGE
5CD6 GREY



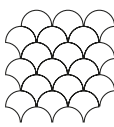
≡ 10 MM
6X30 (2"X12") ⊕
6C41 WHITE
6C42 BEIGE
6C43 GREY



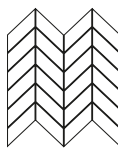
≡ 10 MM
6X30 DEC (2"X12") ⊕ ★
6C44 WHITE
6C45 BEIGE
6C46 GREY



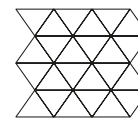
≡ 10 MM
30X60 CIRCLE (12"X24") RET
3J50 WHITE
3J52 BEIGE
3J51 GREY



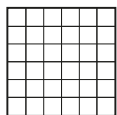
≡ 10 MM
MOSAICO SHELL
FOGLIO 30X30 (12"X12") ○
NL20 WHITE
NL21 BEIGE
NL22 GREY



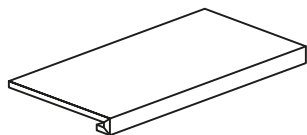
≡ 10 MM
MOSAICO CHEVRON
FOGLIO 30X31 (12"X12") ○
NL11 WHITE
NL12 BEIGE
NL13 GREY



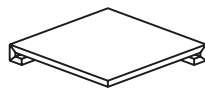
≡ 10 MM
MOSAICO TRIANGOLO
FOGLIO 30X30 (12"X12") ○
NL17 WHITE
NL18 BEIGE
NL19 GREY



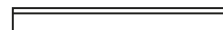
≡ 10 MM
MOSAICO 5X5 (2"X2")
FOGLIO 30X30 (12"X12") ○
NL14 WHITE
NL15 BEIGE
NL16 GREY



≡ 10 MM
GRADINO 30X60 (12"X24") ① *
7L94 WHITE
7L95 BEIGE
7L96 GREY



≡ 10 MM
ANG. GRADINO 30X30 (12"X12") ① *
1JX2 WHITE
1JX3 BEIGE
1JX4 GREY



≡ 10 MM
BATTISCOPIA 7X60 (3"X24") RET
5W57 WHITE
5W58 BEIGE
5W59 GREY

* ARTICOLO A RICHIESTA A SCATOLE INTERE • ON REQUEST FULL BOXES • LAUT ANFRAGE VOLLE KARTON • SUR DEMANDE BOITES COMPLETES
★ nr.4 grafiche miscelate casualmente - nr. 4 graphics casually mixed

INFORMAZIONI GENERALI - GENERAL INFORMATION

- Prodotto in porcellanato smaltato con impasti colorati. Superfici naturali con tecnologia 3D Shaped. Bordi rettificati.
Coloured body glazed porcelain tiles and rectified edges. Natural surfaces with 3D Shaped Technology. Rectified edges.
- Tutte le misure sono nominali. Le conversioni in pollici sono approssimate ed arrotondate.
All sizes are nominal. The conversions into inches are approximate and rounded off.
- Le confezioni contengono il prodotto con diverse sfumature di tono. Al fine di ottenere il migliore effetto estetico, si consiglia, durante la posa, di prelevare le piastrelle alternativamente da scatole diverse e di posarle in senso ortogonale l'una all'altra.
The boxes contain the item with different shade variegations. When you lay down the tiles, in order to obtain the best blend of the colours, we advice you to take the tiles alternatively from different boxes and lay down orthogonally one to the other.
- Per i formati rettangolari consigliamo una posa sfalsata massimo di 1/4 della lunghezza.
For the rectangular sizes we suggest an installation pattern at a maximum of 1/4 of the entire length.
- Bordi rettificati: nella posa mono e multi-formato è consigliato prevedere fughe di almeno 2 mm.
Rectified edges: when you lay down single and multi sizes it is suggested to use grouts of at least 2 mm.
- Ci riserviamo la facoltà di modificare e/o eliminare i formati, i calibri, gli spessori e le grafiche in qualsiasi momento senza che si renda necessaria una espressa comunicazione scritta.
We reserve the right to modify and/or remove the sizes, the calibers, the thickness and the graphics anytime, with no obligation of a further notice in writing.
- I toni degli articoli campionati sono puramente indicativi pertanto le variazioni di tono e di superficie non possono costituire motivo di contestazioni.
The shades of the samples are purely representative of the item itself so the shades variation and the surfaces variations cannot constitute the reason for a claim.

SIMBOLOGIA - SIMBOLOGY

RET	Rettificato		Prodotto tagliato		Prodotto incollato su rete	* A richiesta	★ grafiche miscelate casualmente
	Rectified		Cut item		Item on net	On request	graphics casually mixed

- ① Piastrella con torelo incollato (solo su richiesta). Per uso esterno è necessario adottare tutte le misure per una posa a regola d'arte secondo usi e norme in vigore.
Tile with glued torello (on request only). For external use it's necessary to adopt all precautions for a perfect tile according to usage and regulations in force.

VARIAZIONE CROMATICA - SHADE VARIATION

V1	V2	V3	V4
Aspetto uniforme Uniform appearance	Lieve variazione Slight variation	Moderata variazione Moderate variation	Forte variazione Substantial variation

CARATTERISTICHE TECNICHE - TECHNICAL CHARACTERISTICS

Spessore	Variatione cromatica	Formatura del prodotto	Assorbimento d'acqua	Carico di rottura	Durezza della superficie	Resistenza agli sbalzi termici	Resistenza al cavillo	Conducibilità Termica	Cessione Piombo Cadmio	Resistenza chimica	PEI Resistenza all'abrasione superficiale	Resistenza al gelo	Coefficiente dinamico di frizione	Resistenza allo scivolamento
Thickness	Shade variation	Product Moulding	Water absorption	Modulus of rupture	Hardness of the surface	Resistance to thermal shock	Crazing resistance	Electrical Conductivity	Emission Lead Cadmium	Chemical resistance	Resistance to surface abrasion	Frost resistance	Dynamic coefficient of friction	Slip resistance
			ISO 10545-3 B 1a	ISO 10545-4	E.N. 101 MOHS	ISO 10545-9	ISO 10545-11	UNI E.N. 1745	ISO 10545-15	ISO 10545-13	ISO 10545-7	ISO 10545-12	DCOF	DIN 51130 DIN 51097
								CT	Pb / Cd					
10	V4	RET	< 0,5%	≥ 43 N/mm ²	-	Garantita Guaranteed Garantiert Garantie	Garantita Guaranteed Garantiert Garantie	0,675 < * 0 <2.937"Y/o m	JI <0,1 * c<0,01	GA (V) GLA (V) GHA (V)	5	Garantita Guaranteed Garantiert Garantie	> 0,42	R9 A+B+C

